



# Eastbrook Academy: 2020 COVID Planning Report

---

Onward to Excellence in '20-21



# Committed to our Mission

---

“Eastbrook Academy exists to support families from diverse backgrounds in the academic and spiritual development of their children for college preparation and life. The Academy is founded to impart a rigorous classical education in a loving environment committed to Christian living.”



# Unique Strengths of EBA

---



God has blessed this community in many ways, including:

- Small classes and a large building, providing options for safe, physically-distanced instruction
- Teachers that are incredibly dedicated to students & ready to rise to the challenge
- Our relationship with YMCA provides on-site childcare options
- Generous financial support that has allowed for technology and facilities upgrades
- The unique community of families that trusts our school to provide a safe and supportive environment for their children.

# Our Process

---



- Surveyed parents and staff - over 227 responses
- COVID workgroup, including Parent Advisory Council, Staff, and Board Members
- Sought input from Milwaukee Health Department, Wisconsin Department of Public Instruction, CDC Guidelines, ACSI and ISACS
- Prayer
- Assigned our School Nurse Mrs. Annalisa Siczka-BSN, as our COVID-19 Coordinator



# Our Plan For Returning to School

*Warrior Phase*

**1**

*Digital Learning*

*Warrior Phase*

**2**

*Blended Learning*

*Warrior Phase*

**3**

*Modified  
In-Person*

*Warrior Phase*

**4**

*In-Person*



## Warrior Phase

1

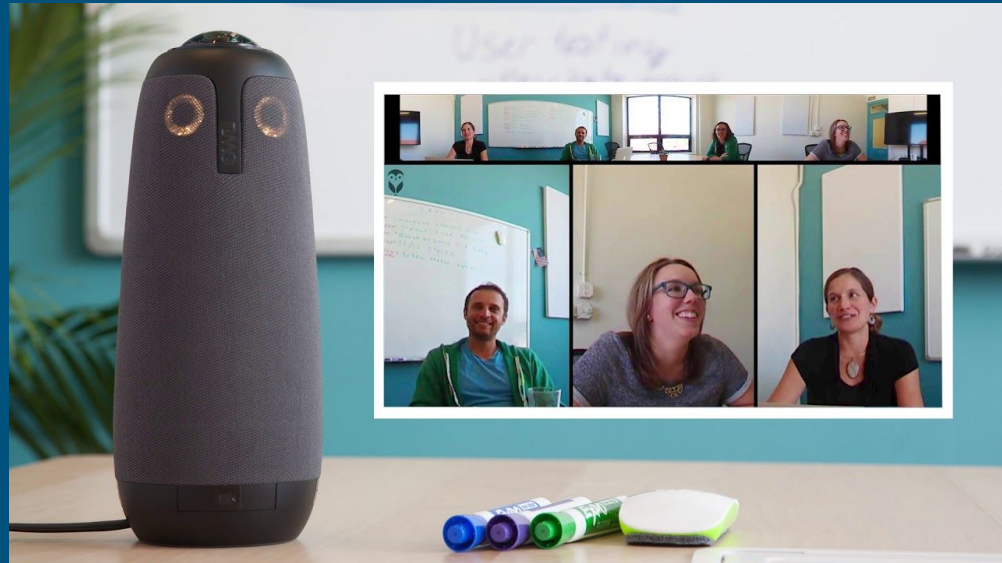
Tech tools allow  
for synchronous  
learning



All Students Receive a  
Chromebook



Teachers will have  
Document Cameras



"Meeting Owl" cameras allow for an immersive classroom experience for those learning digitally. [Video](#)



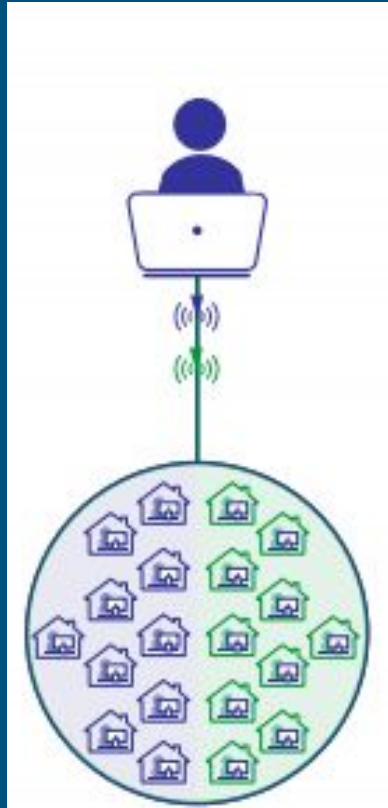
Warrior Phase

1

Digital Learning

\*Reading and Math Title  
Services available in all phases\*

K4 thru 12



Digital Learning

Mon Tues Thurs Fri -  
Synchronous

Weds - Asynchronous

When will this model be used?

- When following guidance from Milwaukee Health Department or other government authorities to have school online
- When there has been a primary COVID-19 case exposure in a classroom
- If staff are unable to be present in-person due to health concerns

It is possible for individual classrooms to be in Phase 1 while other classes may be in Phase 2 or 3

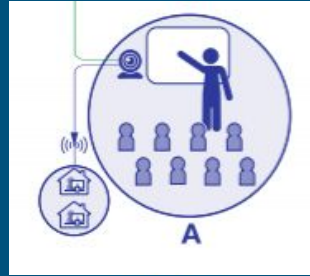


## Warrior Phase

# 2

## Blended Learning

### K4 thru 5th



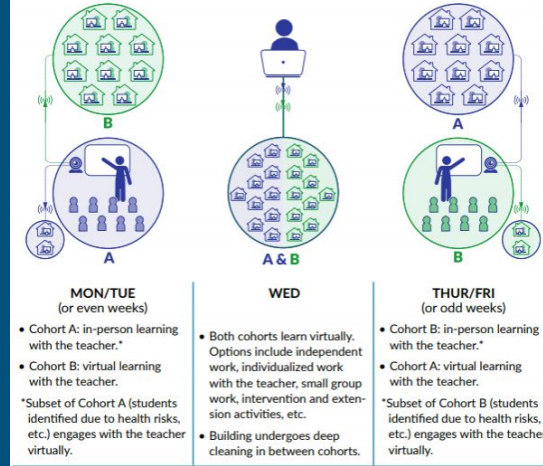
*In Person\* Learning Offered  
Mon Tues Thurs Fri  
with Synchronous Remote  
Option*

*Weds - Asynchronous  
Learning From Home*

Some in-person student learning may involve an EBA instructor teaching digitally

### 6th thru 12th

Enriched Virtual Instruction Model (4\* Days of Instruction w/Teacher)



*In Person\* Learning Rotated  
Between A (Mon/Tu) & B  
(Th/Fri) Group*

*Weds - Asynchronous  
Learning From Home*

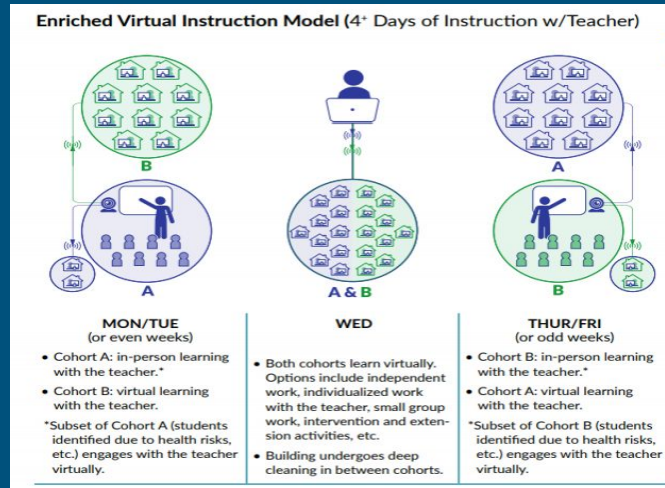




## Warrior Phase

# 2

## Blended Learning



### When will this model be used?

- After government restrictions are lifted
- When COVID Risk for Milwaukee County = HIGH
- When there have been NO positive COVID tests in a classroom for 14 days
- Any vulnerable or high risk families or staff will be able to request their needs to School Administration.

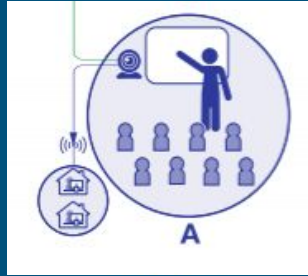


Warrior Phase

3

Modified  
In-Person

K4 thru 12th



*In Person Learning Offered  
Mon Tues Thurs Fri  
with Synchronous Remote  
Option*

*Weds - Asynchronous  
Learning From Home*

*When will this model be used?*

- *After government restrictions are lifted*
- *When COVID Risk for Milwaukee County = MEDIUM*
- *When there have been NO positive COVID tests in a classroom for 14 days*

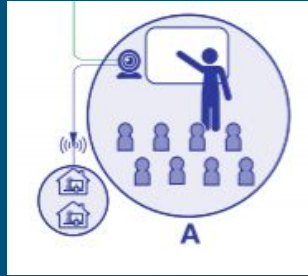


Warrior Phase

4

—  
In-Person

K4 thru 12th



*In Person Learning Offered  
Monday - Friday*

*\*Meeting Owl Still used for  
students home ill or with  
compromised immune  
systems.\**

*When will this model be used?*

- *After government restrictions are lifted*
- *When COVID Risk for Milwaukee County = LOW*
- *When there have been NO positive COVID tests in a classroom for 14 days*

# What stage will EBA open at?

---

- We have been in consultation with the City of Milwaukee Health Department and are providing them all of the information needed to consider reopening.
- We have received initial guidance that our overall plan is good. However, they are not prepared to give any in person approval yet, due to their checklist and gating criteria for moving between phases not being complete.
- We will open the 1st month in Phase 1 and evaluate during that month if and when we can move to Phase 2

# Family Choices

---

- Parents will have a way to indicate their current preferences:
  - All Digital
  - 2 Days Per Week in-person
  - 4 Days Per Week (Monday, Tuesday, Thursday, Friday)
  - These preferences can be updated throughout the year
  - More details on how preferences will work will follow
- Preference for digital learning will be available at all times
- In “Stage 2,” 2-day and 4-day will depend on availability
  - We expect to have availability for K4 through 5th in-person
  - We have a limited number of 4-day-per-week availability in 6th-12th grade, but will seek to honor as many family preferences as we are able



When we are  
together, how  
will we remain  
safe?

Pods of Students

Physical Distancing

Minimizing Exposure

Face Coverings

Cleaning & Hygiene

Monitoring for Symptoms

---

# Physical Distancing

---



- Our COVID-19 task force has mapped out capacity for students in classrooms to maximize the distance between occupants and make adjustments in each class. Fortunately, we have a large and flexible campus with classrooms of varying sizes.
- Our campus will be marked with clear directional signage for hallway traffic.
- We will limit the size of student groups or utilize virtual learning.
- As recommended by the Milwaukee Health Department, will adjust student capacity by 50%

# Classrooms

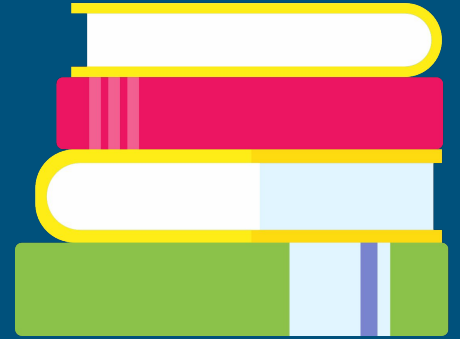
---

- Classrooms will be marked for proper distancing
- All excess furniture will be removed for optimal space for distancing
- Plexiglass or plastic dividers will be used on workstations, where appropriate
- There will be proper hygiene and cleaning products available in each room
- Students will sanitize when entering each class and all student spaces and touchpoints will be wiped down as they leave the class
- Staff will be trained, based on Milwaukee Health Department guidelines on how to administer COVID-19 training to the students in their classes



# Minimizing Exposure

- Limited student movement around campus
- Students remain in small cohorts
- Modified meal delivery system (to classrooms)
- Staggered passing and recess times
- Traffic flow markings will be used in hallways and all public spaces for proper distancing
- No In-Person Large group activities, sports or field trips until Phase 4
- Designated isolation room
- Coordinating with EBC and our cleaning services regarding HVAC risk mitigation, electrostatic devices, foggers, etc.



# Visitor Protocols

---

- Limits on non-essential visitor entry into school at times when students are present
- Symptom screening of all visitors, based on Health Department guidelines
- Requiring masks and physical distancing
- Restricting access of visitors to pods of students, except in situations approved by the head of school



# Transportation

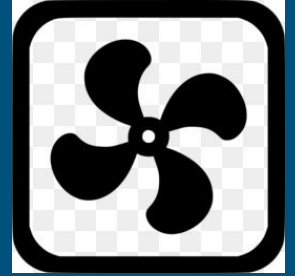
---

- Will work with the bus company to ensure proper distancing and hygiene compliance
- Students will sanitize when coming off of the bus and will be screened by a staff member prior to entering the building



# Ventilation

---



- A Wing: Ventilators circulate air in room every 4-10 minutes
  - Staff will be asked to keep ventilators at all times when students are present
- B & C Wing: Forced HVAC will be used to circulate air continuously (not on “automatic,” only circulating when temperatures warrant)
- Use of ceiling fans, where available to aid air circulation
- Encouraging open windows, where available and when climate permits

# Face Coverings

## Face Masks

---

Students will wear face masks while on campus, as mandated by health officials. EBA will provide if necessary.

Training will be conducted in the first weeks of in person instruction when allowed.

For students with health conditions, or other needs, that may make face coverings impractical, we will work with families to find an acceptable alternative.

## Face Shields

---

In some circumstances, face shields may be more useful to create a learning environment. Students will be deployed face shields that can be used in lieu of masks, or in addition to masks, at certain times.

# Building Signage

---

- In conjunction with the Milwaukee Health Department guidance, signage will be utilized throughout the building to help mitigate risk and ensure proper traffic flow.
- Signs on external doors will communicate requirements for visitors, staff and students to enter the building.
- A QR code, poster on the main entry door, is used for visitors to complete a health checklist prior to entry.

# Cleaning & Hygiene

---

- Modifications to Cleaning Practices to incorporate best-practices for disinfecting spaces. Use of hydrostatic disinfecting machine
- Handwashing will be emphasized and reinforced
- Hand sanitizer will be available broadly in all classes and hallways.
- Minimizing shared objects; disinfecting between uses
- CDC approved cleaning products will be available for staff and day-porter use to clean high-touch areas (hallways, restrooms, etc.)



# Monitoring for Symptoms

---

- Daily Screening questionnaire for all families and staff
- Anyone with a temperature greater than 100.4, or with other COVID-related symptoms, will be sent home and need to be picked up within 60 minutes.
- Those with exposure to known COVID-cases will learn remotely for 14 days
- Full Time Nurse on Campus as our COVID-19 School Coordinator
- Guidelines are aligned with the Milwaukee Health Department
- Staff who are high risk will be able to work remotely.
- School COVID-19 Coordinator will monitor cases for moving between phases.



# Staff Training and Plans

---

- Staff will be trained on COVID-19 sick leave policies, state and local mitigation efforts, and cleaning procedures
- Staff will report regular personal day absences in the school human resources app and COVID symptom/exposure absences in a detailed google form
- Office Staff and specials teachers have been enlisted to help in the case of staff shortages in classrooms and support areas.
- Staff will be trained and scheduled for helping to clean touch points and other common spaces

# Communication

---

- Our School COVID-19 Coordinator will work with our leadership team and the Milwaukee Health Department for guidance in communicating exposure.
- Families are asked to contact the school with any information about positive tests or exposure within the household.
- Families are also asked to share exposure through any other outside activities.
- EBA will use our school website, social media and SIS text alert system to notify families of important COVID-19 info

Questions or  
Comments:

[fpierce@eastbrook  
academy.org](mailto:fpierce@eastbrookacademy.org)